

## 2025+ Hyundai IONIQ 5 Installation Instructions

View instructions and photos online

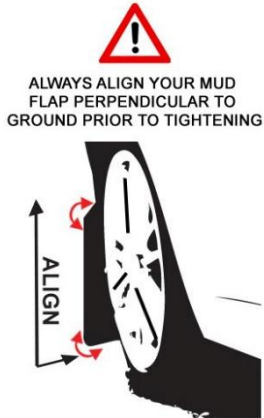
**CARE AFTER INSTALLATION** Once installed, vehicle owner is responsible for condition of mud flaps and all costs associated with replacing damaged or lost parts. Warranty covers manufacturer defect on new, never installed parts.

⚠ Watch for blind spots when parking ⚠ Avoid contact with curbs and objects that compress flaps with excessive force. Check wheel clearances, especially on vehicles equipped with aftermarket wheels and suspensions.

QUESTION ON INSTALLATION? CONTACT [www.rallyarmor.com/support](http://www.rallyarmor.com/support)

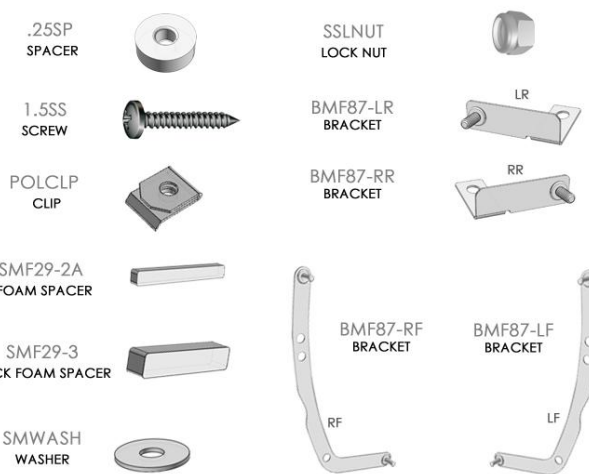
**NEED TO PURCHASE REPLACEMENT PARTS? SEND RECEIPT OR PHOTO OF MUD FLAPS TO [www.rallyarmor.com/support](http://www.rallyarmor.com/support)**

### IMPORTANT NOTES



### INSTALLATION KIT CONTENTS

QUANTITY	PART	ITEM ID
6	SPACER	.25SP
10	SCREW	1.5SS
4	CLIP	POLCLP
2	FOAM SPACER	SMF29-2A
2	THICK FOAM SPACER	SMF29-3
16	WASHER	SMWASH
6	LOCK NUT	SSLNUT
1	BRACKET LEFT FRONT	BMF87-LF
1	BRACKET RIGHT FRONT	BMF87-RF
1	BRACKET LEFT REAR	BMF87-LR
1	BRACKET RIGHT REAR	BMF87-RR



**Recommended Tools** Low-profile offset or ratcheting screw driver, 7/16<sup>th</sup> wrench, flathead screwdriver.

**Important Tips** Installation should be done on an even surface. Do not use power tools to tighten hardware. Hand tools only. Avoid overtightening.

### RALLY ARMOR - A BIT ABOUT OUR STANDARD IN MUD FLAPS

Rally Armor mud flaps are fabricated from a high grade polyurethane plastic that is rigorously reviewed for quality and consistency. As with all manufacturing processes, controlled conditions and multiple QC checkpoints minimize major irregularities, however certain very minor surface layer marks appear periodically. These are visual variations that do not affect construction nor do they impede the performance of the flaps. Most matte away as the material ages naturally with continued exposure to the outdoors. Each flap is unique in appearance yet all are structurally sound.

## 2025+ Hyundai IONIQ 5 Installation Instructions

### FRONT MUD FLAP

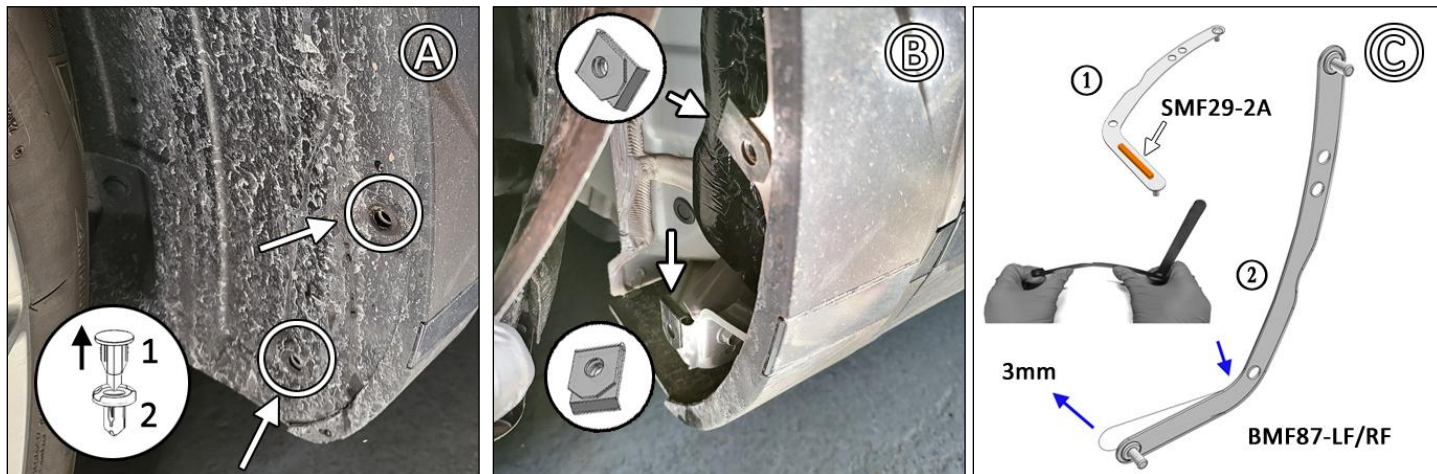
**Bracket & Hardware 1 x Front Flap → 1 x BMF87-LF/RF; 2 x 1.5SS; 2 x POLCLP; 1 x SMF29-2A; 4 x SMWASH; 2 x SSLNUT**

Turn the steering wheel towards the side you are working on to gain access to the inner wheel well area.

**FIGURE A** Remove factory fasteners. Pull liner away from fender.

**FIGURE B** Install POLCLP over upper and lower mounting points. Reinstall liner.

**FIGURE C** Affix SMF29-2A THIN FOAM SPACER behind low section of bracket. Slightly curve lower bracket back about 3mm to ensure foam contacts liner when installed. Repeat process as needed.



**FIGURE D/E** Position BMF87-LF/RF bracket behind mud flap. Place logo-side of mud flap facing rear of the vehicle against mounting points on liner and bracket. Use 1.5SS & SMWASH to fasten points 2 & 4. Use SSLNUT & SMWASH for mounting points 1 & 3. Ensure inner foam spacer contacts liner. Repeat Figure C as needed.

**FIGURE F** Ensure mud flap is parallel to even ground. Hand tighten only until washers seated against flap. **Adjust as needed.**



**2025+ Hyundai IONIQ 5 Installation Instructions**

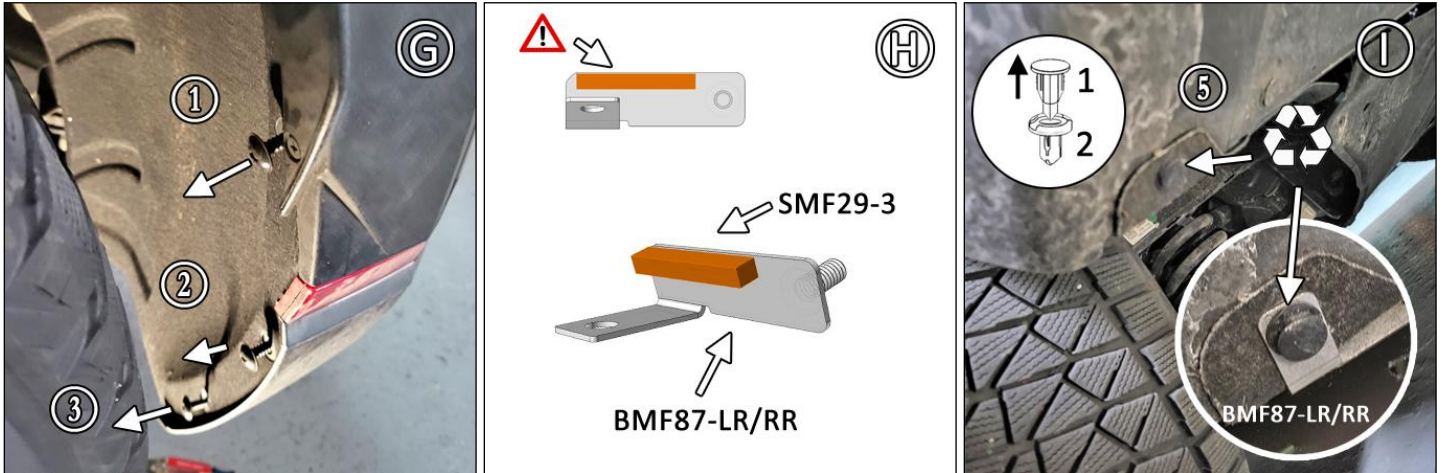
**REAR MUD FLAP**

**Bracket & Hardware 1 x Rear Flap → 1 x BMF87-LR/RR; 3 x .25SP; 3 x 1.5SS; 1 x SMF29-3; 4 x SMWASH; 1 x SSLNUT**

**FIGURE G** Remove factory liner fasteners 1 - 3.

**FIGURE H** Adhere SMF29-3 spacer to upper section of rear bracket BMF87-LR/RR.

**FIGURE I** Remove and retain lower fastener under bumper. Re-install BMF87-LR/RR bracket in mount 5.



**FIGURE J** Place logo-side of mud flap facing rear of the vehicle against corresponding mounting points. Use 1.5SS & SMWASH to fasten points 1 - 3. Use SSLNUT and SMWASH for mount #4. Do not fully tighten.

**FIGURE K** Ensure mud flap clears fender liner.

**FIGURE L** Ensure mud flap is parallel to even ground. Hand tighten only until washers seated against flap. **Adjust as needed.**



# IMF137



## 2025+ Hyundai IONIQ 5 Installation Instructions



FRONT

MF137 MOUNTING DIAGRAM

REAR

