



2025+ Hyundai Tucson XRT Installation Instructions

View instructions and photos online

CARE AFTER INSTALLATION Once installed, the vehicle owner is responsible for the condition of the mud flaps and all costs associated with replacing damaged or lost parts. Warranty covers manufacturer defect on new, never installed parts.

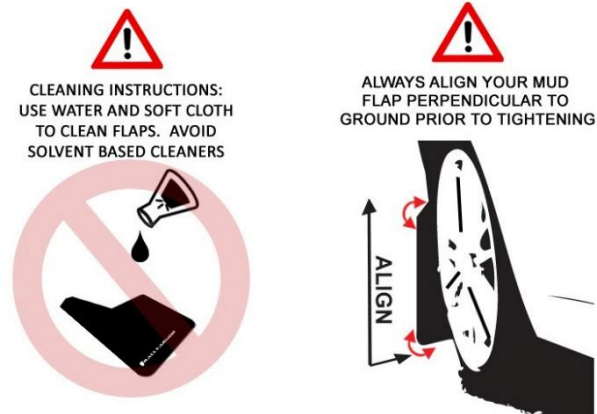
⚠ Watch for blind spots when parking ⚠ Avoid contact with curbs and objects that compress flaps with excessive force. Check wheel clearances, especially on vehicles equipped with aftermarket wheels and suspensions.

QUESTION ON INSTALLATION? CONTACT www.rallyarmor.com/support

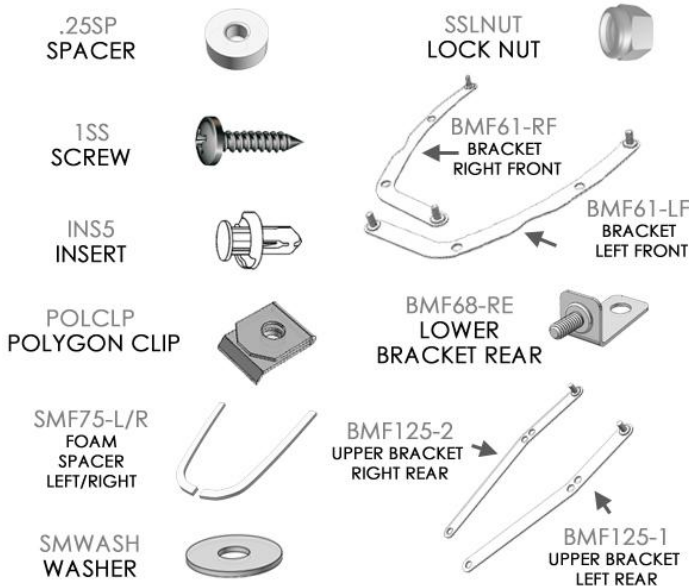
NEED TO PURCHASE REPLACEMENT PARTS? SEND RECEIPT OR PHOTO OF MUD FLAPS TO www.rallyarmor.com/support

IMPORTANT NOTES

INSTALLATION KIT CONTENTS



QUANTITY	PART	ITEM ID
4	SPACER	.25SP
8	SCREW	1SS
2	INSERT	INS5
4	POLYGON CLIP	POLCLP
1	FOAM SPACER LEFT	SMF75-L
1	FOAM SPACER RIGHT	SMF75-R
16	WASHER	SMWASH
8	LOCK NUT	SSLNUT
1	BRACKET LEFT FRONT	BMF61-LF
1	BRACKET RIGHT FRONT	BMF61-RF
2	LOWER BRACKET REAR	BMF68-RE
1	UPPER BRACKET LEFT REAR	BMF125-1
1	UPPER BRACKET RIGHT REAR	BMF125-2



Recommended Tools Low-profile offset or ratcheting screw driver, 7/16th wrench, flathead screwdriver.

Important Tips Installation should be done on an even surface. Do not use power tools to tighten hardware. Hand tools only. Avoid overtightening.

RALLY ARMOR - A BIT ABOUT OUR STANDARD IN MUD FLAPS

Rally Armor mud flaps are fabricated from a high grade polyurethane plastic that is rigorously reviewed for quality and consistency. As with all manufacturing processes, controlled conditions and multiple QC checkpoints minimize major irregularities, however certain very minor surface layer marks appear periodically. These are visual variations that do not affect construction nor do they impede the performance of the flaps. Most matte away as the material ages naturally with continued exposure to the outdoors. Each flap is unique in appearance yet all are equally structurally sound.



2025+ Hyundai Tucson XRT Installation Instructions

FRONT MUD FLAP

Bracket & Hardware 1 x Front Flap → 2 x 1SS; 2 x POLCLP; 1 x SMF75; 4 x SMWASH; 2 x SSLNUT; BMF61-LF/RF

Turn the steering wheel towards the side you are working on to gain access to the inner wheel well area.

FIGURE A Remove factory fasteners 1 & 2. Pull liner away from fender.

FIGURE B Install POLCLP over upper and lower fender mounting points. Reinstall liner.

FIGURE C Following the curve of lower end rocker panel, affix SMF75 FOAM SPACER.

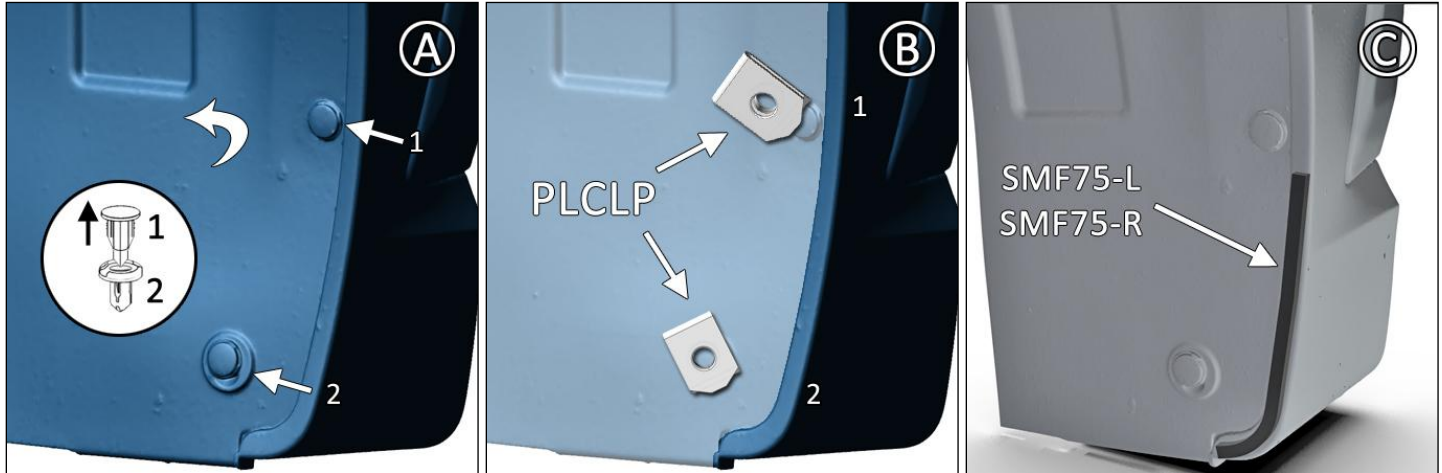
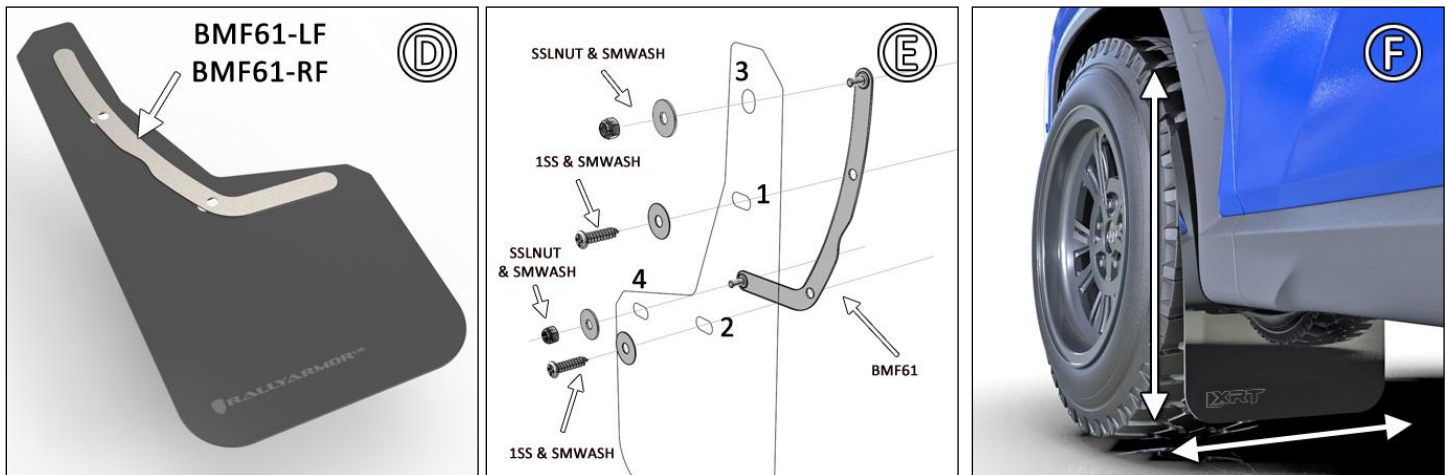


FIGURE D/E Place logo-side of mud flap facing rear of the vehicle against mounting points on liner. Position BMF61-LF/RF bracket against mounting points. Use SMWASH & SCREW 1SS to fasten points 1 & 2. Use a SMWASH & SSLNUT for points 3 & 4. Do not fully tighten.

FIGURE F Ensure mud flap is parallel to even ground. Hand tighten only until washers seated against flap. Adjust as needed.



REAR MUD FLAP

Bracket & Hardware 1 x Rear Flap → 2 x .25SP; 2 x 1SS; 1 x INS5; 4 x SMWASH; 2 x SSLNUT; 1 X BMF125-1/2 ; 1 x BMF68-RE

FIGURE G Remove factory 1, 2 and lower liner fasteners.

FIGURE H Stud facing front of vehicle, use INS5 to install BMF68-RE.

FIGURE I Place mud flap logo-side facing rear of the vehicle against mounting points on the BMF125-1/2 bracket and liner. Pair

IMF125



2025+ Hyundai Tucson XRT Installation Instructions

SMWASH & 1SS to fasten points 1 & 2 with a .25 SP BEHIND bracket. Use SMWASH & SSLNUT for points 3 & 4. Align flap until perpendicular to even ground. Hand tighten only until washers are seated against the mud flap. Do not overtighten.



RALLYARMOR[®] IMF125 MOUNTING DIAGRAM

